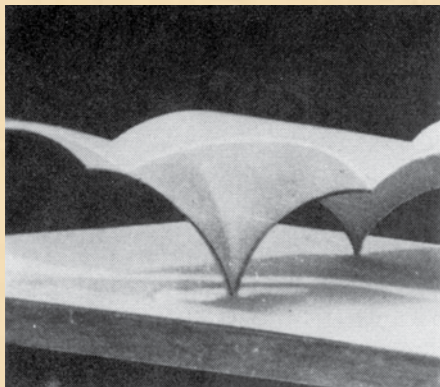
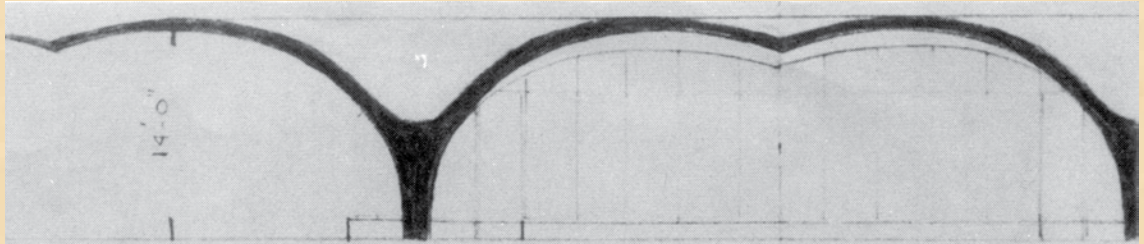




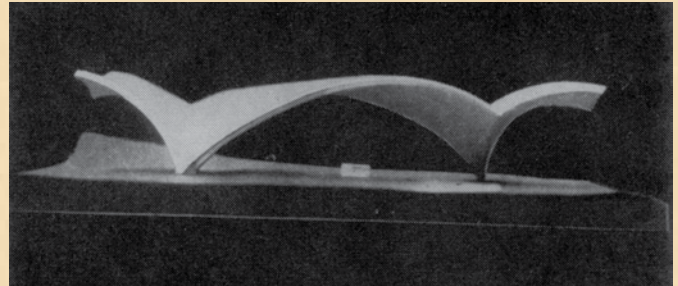
From the library of Chris Zynda

Chris Zynda is President of ASA and Safety Subcommittee Chair. He is a member of ACI Committees 506, Shotcreting, and C660, Shotcrete Nozzleman Certification; an ASTM member; and a certified ACI Examiner.

Airform Industrial Construction

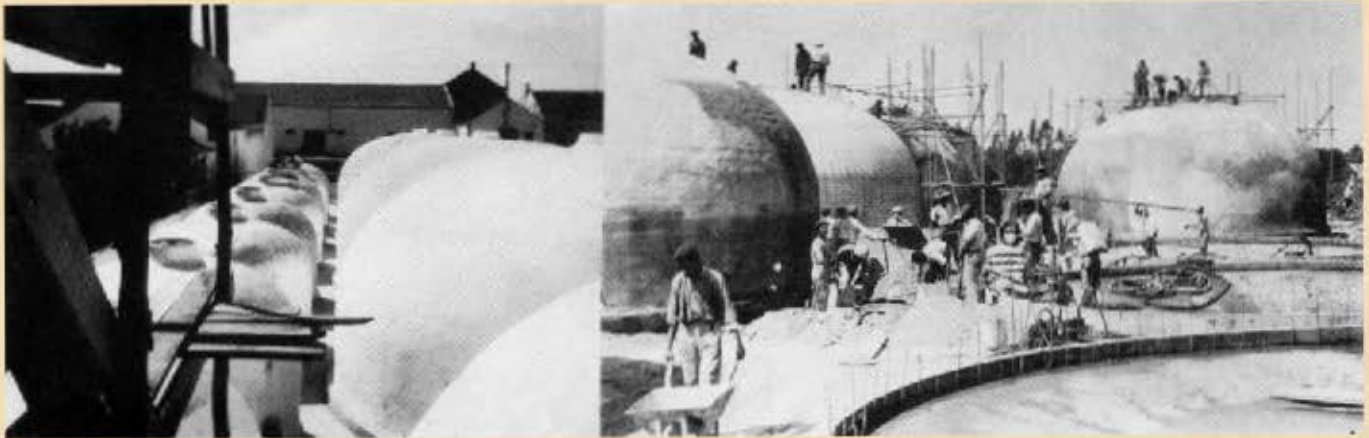


**CANOPY SHAPES
FOR SERVICE STATIONS, ETC.**



GOVERNMENT WINE STORAGE PROGRAM, PORTUGAL, 1956

Shotcrete Classics



PROCESS OF CONSTRUCTION GOVERNMENT WINE STORAGE PROGRAM, PORTUGAL, 1956

With two Goodyear forms 29 ft. in diameter, 14 ft. high, two tanks are finished each day! In 2½ months 14 million litres storage capacity were completed.

Each tank capacity:

- 60,000 U. S. Gallons, or
- 6,500 U. S. Bushels, or
- 8,100 cu. ft. usable storage

No waterproofing necessary.

Thickness of walls: 4" at base, tapered to 2" at crown.

Orders have just been received for 5000 additional tanks.

Builders: Construtora Iberica, Lda.,
Lisbon, Portugal



HUGE 25 FT. x 55 FT. "GOODYEAR" FORM

These forms are made of 8½ oz. rubberized nylon, are fabricated by the Aviation Products Division of Goodyear Tire and Rubber Co. in shapes which permit the erection of half-barrel, spherical, cylindrical elongated and semi-spherical buildings along with straight side-walls and rectangular floor plans.

GOODYEAR AIRFORM BEING DEFLATED SIZE 25 FT. x 55 FT.



Shotcrete Classics



GRAIN STORAGE DEPOT • RUSEIFA, NEAR AMMAN, JORDAN
KINGDOM OF JORDAN PROJECT (U. S. Dept. of State, TCA)

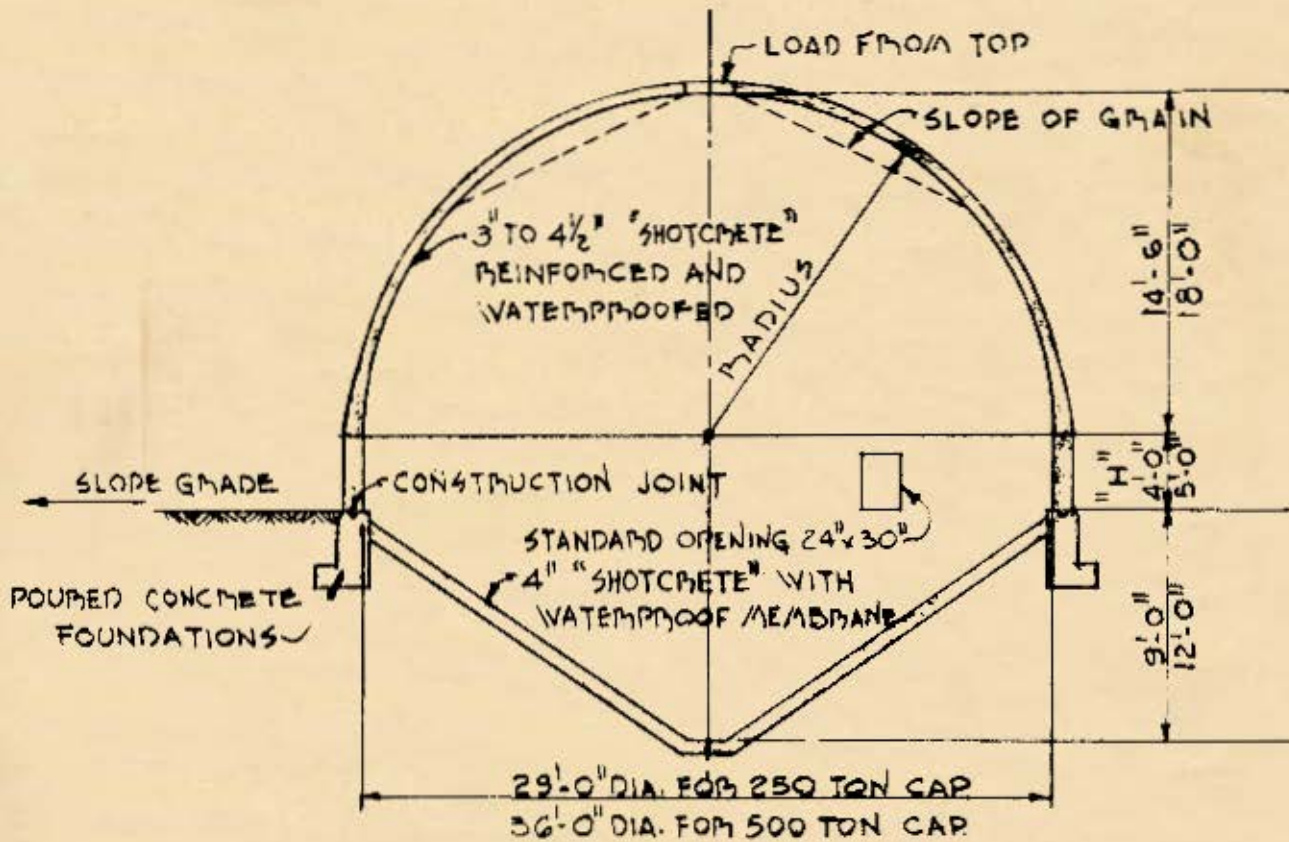
Ten 36 ft. diameter units of 500 ton capacity each, total 171,500 bushels
Link Belt Co.'s conveyor system for handling grain

Twenty-four 29 ft. diameter tanks, 250 tons capacity each
U. S. GRAIN STORAGE • SOUTHWEST COTTON CO. • ARIZONA



Shotcrete Classics

AIRFORM GRAIN STORAGE BINS
 Conical-bottom, semi-spherical type
 of 250 tons (226.796 metric tons) and 500 tons (453.592 metric tons) capacity



APPROXIMATE QUANTITIES

Nominal Capacity	250 Ton		500 Ton	
Inside Diameter	29	Ft.	36	Ft.
Capacity, Semi-sphere	6380	C.F.	12200	C.F.
Capacity, Cylinder Section "H"	660.52	C.F.	1017.88	C.F.
Capacity, Cone Section	1980	C.F.	4070	C.F.
Capacity, Bushels	8820		17150	C.F.
Capacity, Tons (total liquid capacity)	264	Tons	513	Tons
Surface Area, Semi-Sphere	1321	S.F.	2040	S.F.
Surface Area, Vertical Wall	364	S.F.	565	S.F.
Surface Area, Cone	767	S.F.	1225	S.F.
<u>Cubic Yards of "Shotcrete", One Inch Thick</u>				
Cubic Yards of "Shotcrete", Semi-Sphere	4.07	C.Y.	6.28	C.Y.
Cubic Yards of "Shotcrete", Vertical Wall	1.10	C.Y.	1.74	C.Y.
Cubic Yards of "Shotcrete", Cone Section	2.38	C.Y.	3.78	C.Y.
Reinforcing 100-150 pounds per cu. yd. of "Shotcrete"				

UNIT: 1.245 Cubic Feet = 1 Bushel Wheat.