

A Shotcrete feature:

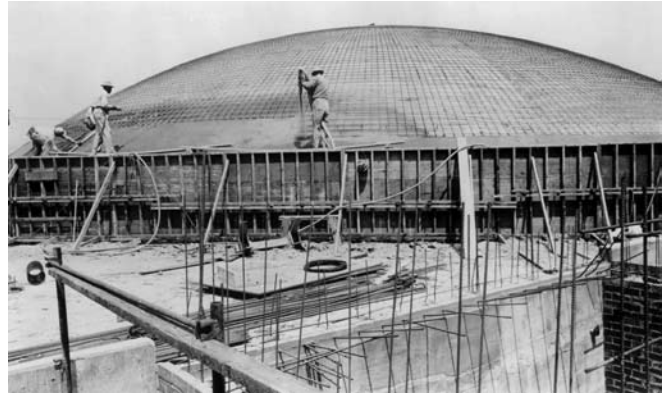
SAFETY SHOOTER

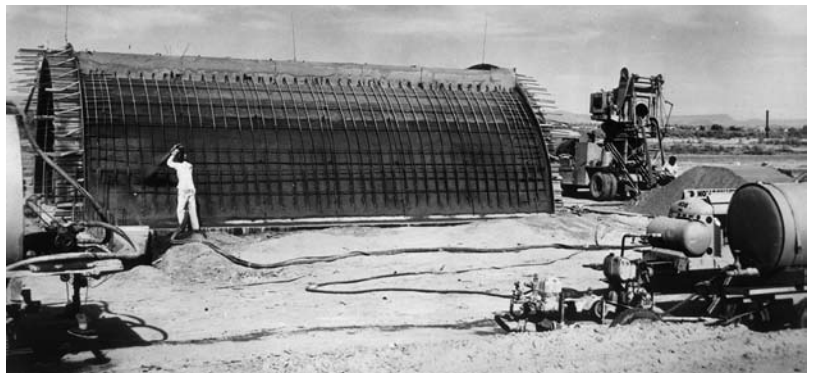
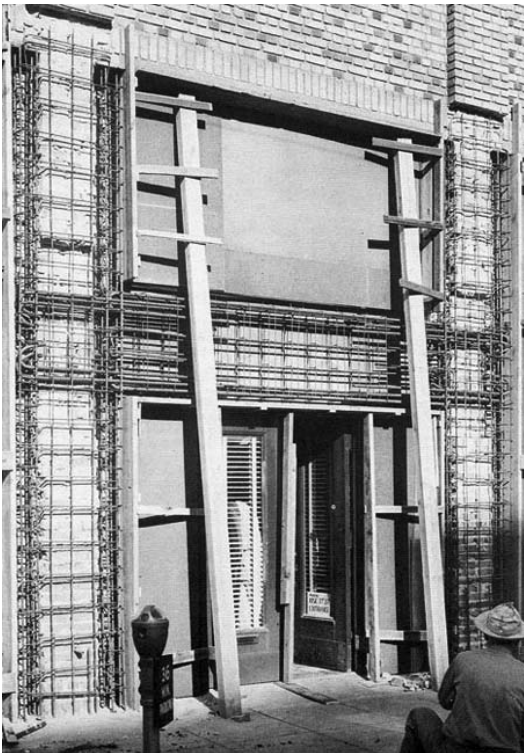


The Need for Safety:

See if you can spot the safety concerns in these historic shotcrete pictures!

by Chris Zynda, Director of Shotcrete Operations, Joseph J. Albanese, Inc.,
ASA Vice President and Safety Subcommittee Chair





The ASA Safety Committee is compiling a new Shotcrete Safety Guide. If you have any information you would like to contribute, please forward it to the Chair of the Safety Subcommittee, Chris Zynda, at czynda@jjalbanese.com.